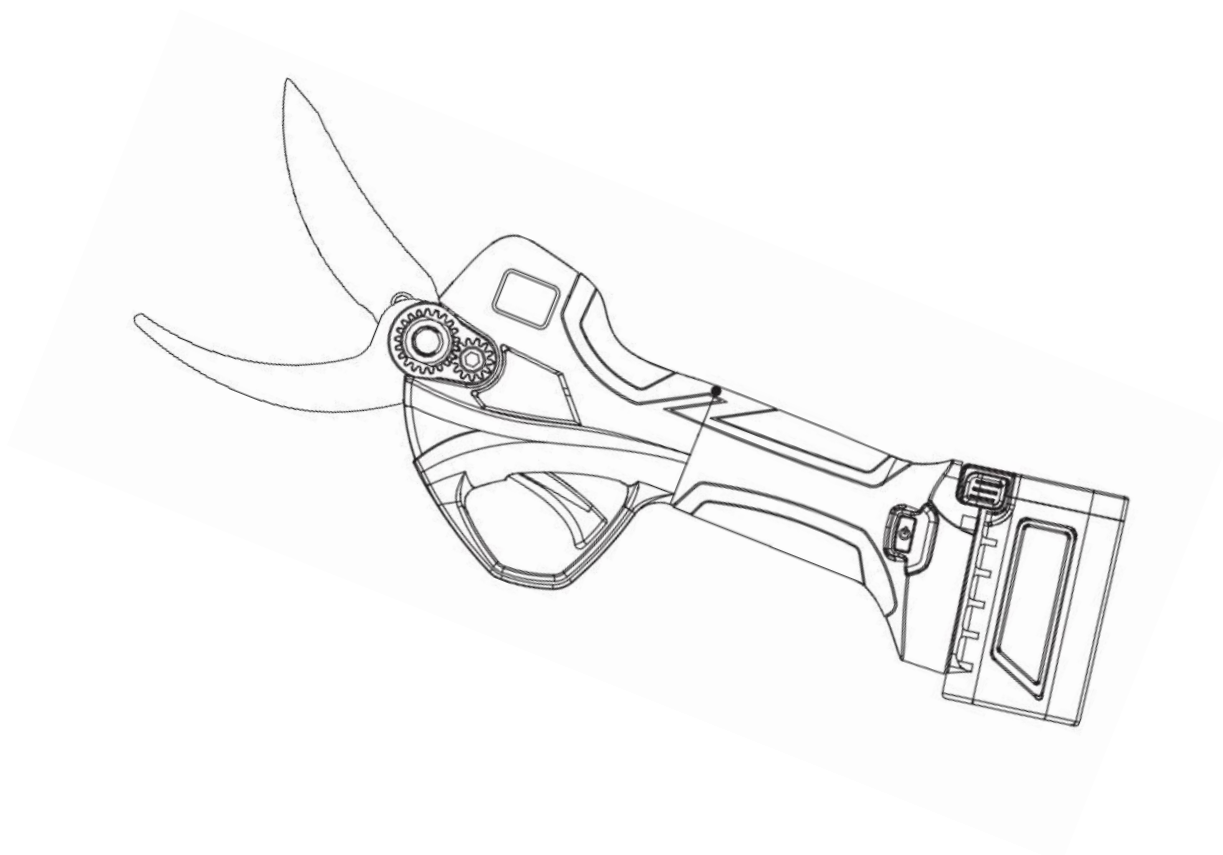


## **SHEAR MANUAL**

# **PS32 HOOFF**



## CE CONFORMITY DECLARATION

### ARVIPO

C/ Dels Esqueis, 27  
08415 Bigues i Riells  
Barcelona – Spain  
Phone number: +34 93 628 98 87  
Web: [www.arvipo.net](http://www.arvipo.net)  
E-mail: [info@arvipo.net](mailto:info@arvipo.net)

WE HEREBY DECLARE UNDER OUR OWN RESPONSIBILITY THAT THE MACHINE:

TYPE: **Battery-powered autonomous hoof trimming equipment with electronic shears control or cutting tool.**

BRAND: 

MODEL: **PS32 HOOF**

SERIAL NUMBER:



Has been manufactured in accordance with the standards or regulatory documents:

Machine safety:	EN-ISO-12100-1/EN-ISO-12100-2 EN-62841-2-8/EN-62841-3-10
Electromagnetic compatibility:	EN-55014-1/EN-55014-2/EN-61000-3-2 EN-61000-3-3/EN-62233-1
Electrical safety:	EN-60335-1+A11:2014/EN-60335-2-29

And conforms to the essential requirements of the following directives:

Machine directive 2006/42/CE  
Electromagnetic compatibility directive 2014/30/CE  
Low voltage directive 2014/35/CE

  
LIMSA CORPO, S.L.  
Avda. del Carrilet, 353, 1 pl.  
08907 L'Hospitalet de Ll. (Bcn)  
Tel: 93 269 01 84

Agustí Bosch,  
Administrador.

**AUTHORIZED DEALER:**



**ARVIPO**

C/ Dels Esqueis, 27

08415 Bigues i Riells

Barcelona – Spain

Tel. +34 93 628 98 87

Web: [www.arvipo.net](http://www.arvipo.net)

E-mail: [info@arvipo.net](mailto:info@arvipo.net)

## CONTENT

Included in the case .....	6
Product components.....	7
Assemble & disassemble the charging plug.....	8
Technical specifications.....	9
Operating instructions .....	9
Turn ON.....	9
Turn OFF.....	10
Failure tips.....	11
Use, maintenance and precautions of the battery .....	12
Battery charge .....	12
Precautions.....	14
Battery maintenance.....	14
Maintenance before use .....	15
Cutting blade lubrication.....	16
Steps for cutting blade lubrication.....	16
Adjusting the cutting blade .....	16
Cutting blade replacement.....	17
Use, maintenance and precautions of the shear .....	18
Safety precautions.....	19
Workplace safety instructions.....	19
Electrical safety instructions .....	19
Personal safety instructions .....	19
Precautions.....	20
After sales service .....	20
CPS Safety system .....	21
Conditions and registration of warranty .....	22



Read all warnings and safety instructions carefully, failure to follow these warnings and instructions can result in electric shock, fire, or other serious injury.

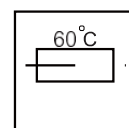
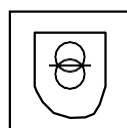
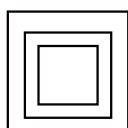
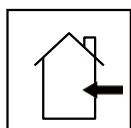
**Please save this manual for possible future reference.**



Strictly follow the laws and regulations on waste disposal in the corresponding countries. Electrical and electronic components cannot be disposed of as household waste. Equipment, accessories and packaging must be recyclable.



Disposal of discarded equipment in household garbage is prohibited.



Carefully read all warnings and safety instructions. Failure to follow warnings and instructions can cause electric shock, fire, severe burns, and other accidents.



Do not use or expose the electric shear in rainy conditions.



Never place your hands near the cutting area of the electric shear during operation.



Never touch electrically charged objects with the electric shear.

**This product is a battery powered electric shear, it contains a fixed counter blade, a movable cutting blade, a lithium battery, a charger, etc.**

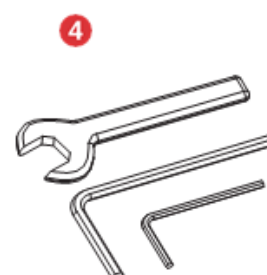
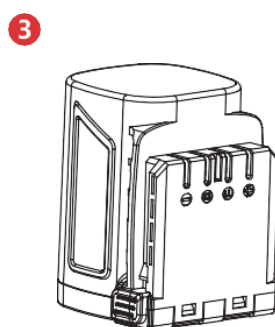
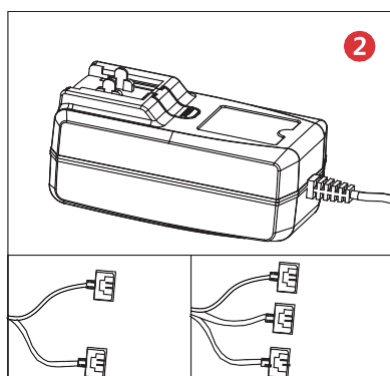
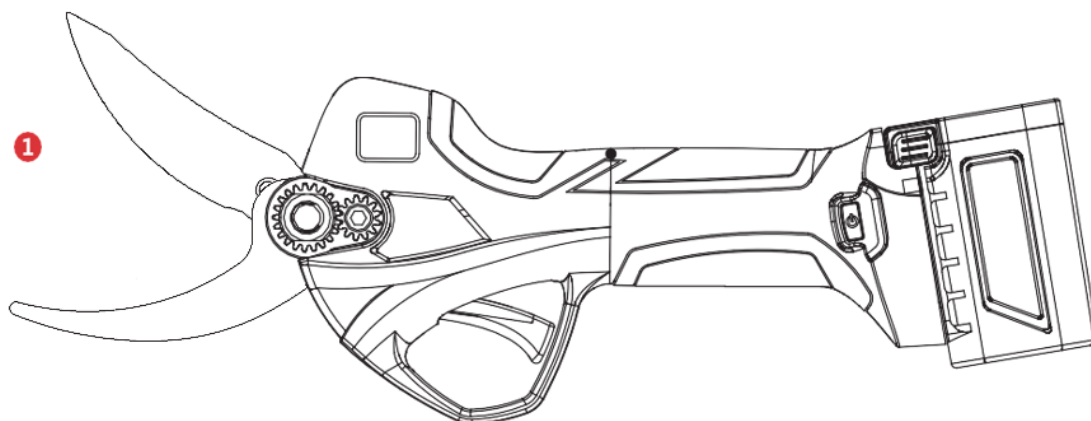
**The shear is designed for cutting animal hooves. It is simple and easy to handle.**

**IMPORTANT:** It cannot be used to cut branches or other materials as it can damage the equipment.



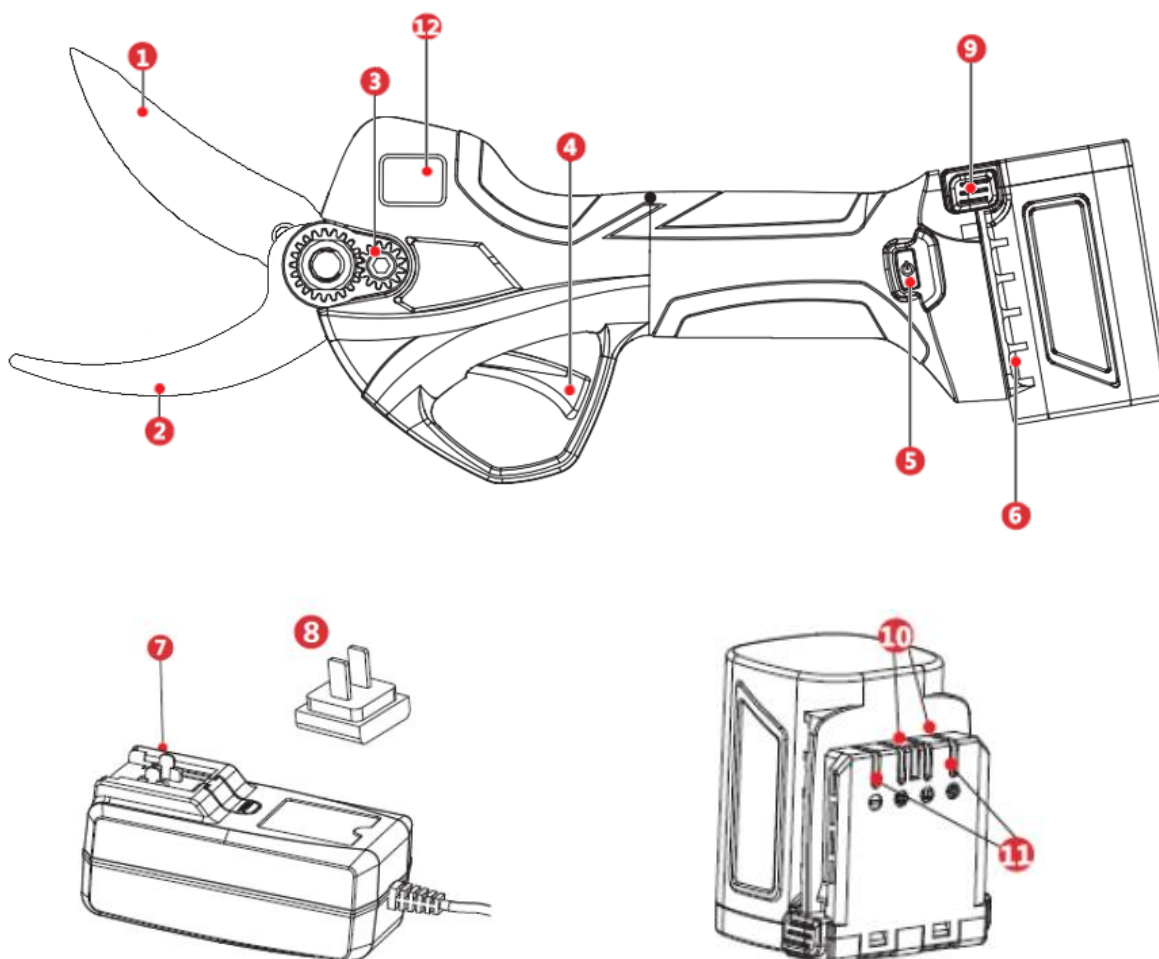
## Included in the case

1. Electric shear
2. Battery charger
3. Battery
4. Tool kit



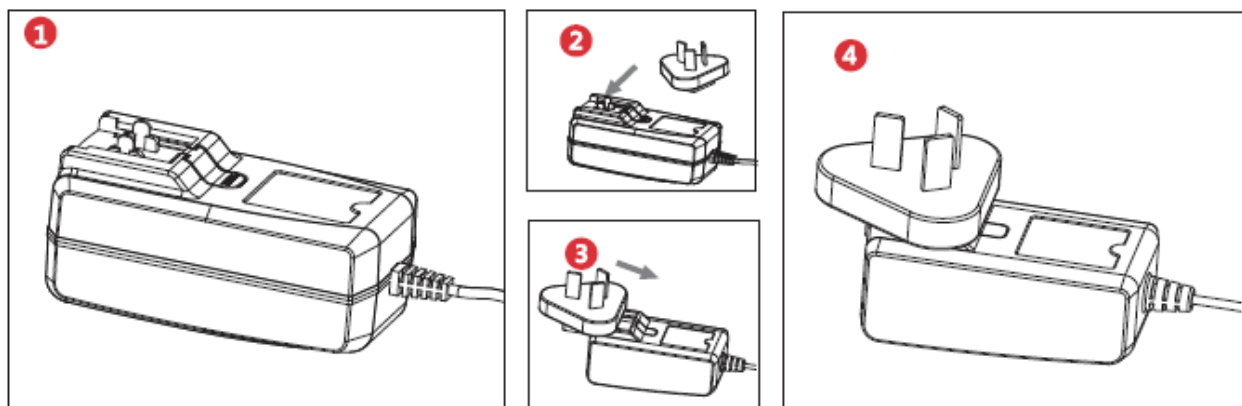
➤ **Product components**

1. Cutting blade HOOF
2. Movable counter blade HOOF
3. Block screw
4. Trigger
5. Power button
6. Battery pack inserts
7. Charger plug
8. Charger AC socket
9. Battery removal button
10. Battery charging connector
11. Battery discharge socket
12. Display screen

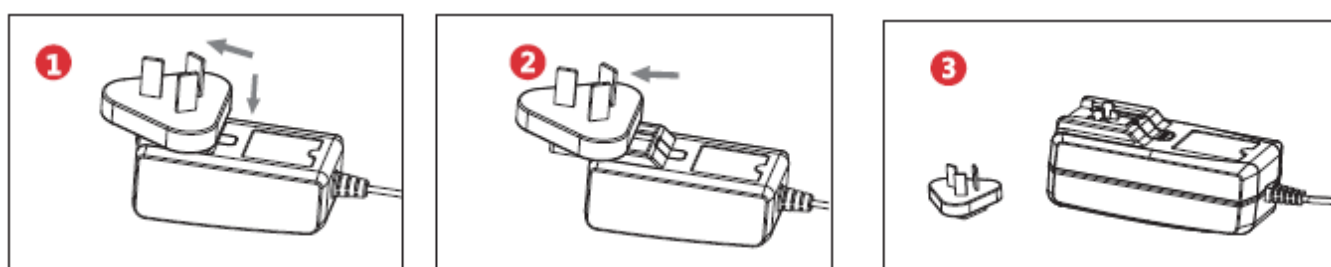


## Assemble & disassemble the charging plug

Push the charging plug parallel to the charger socket to complete the installation.



Press and hold the disassembly button as shown in Figure 1, while pushing the charger plug out.





## Technical specifications

Basic information of the electric shear	
Maximum voltage	16,8V
Operating voltage	14,4V
Lithium battery	16,8V – 2,5A
Input voltage of the charger	AC110V~220V
Charging time of the battery	1.5~2 hours
Working time (3 batteries)	8~10 hours
Maximum power	500W
Total weight	938 g

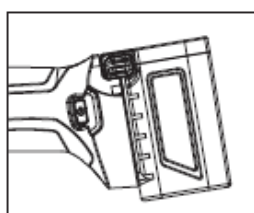
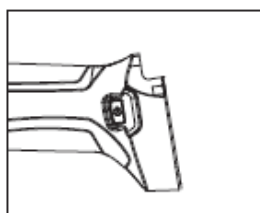
Cutting range (maximum size)	
Diameter	35mm
Working temperature	-10°C~60°C



## Operating instructions

### ➤ Turn ON

1. Open the package and insert the battery into the battery inserts of the electric shear.



2. Turn ON the power button shear and the LED will turn green.
3. The first start buzzer sounds 2 times, then the trigger is pressed 2 times to activate the electric shear.
4. **IMPORTANT:** To work with animals it is recommended to deactivate the CPS system.

**Activate/Deactivate CPS:** Turn on the shear and hold down the power button until you hear 3 beeps. When you stop the shear and open it again, in the normal way, the shear will remember that it has the CPS system deactivated.

5. **Normal cut:** Press the trigger and then the blade will close. Release the trigger and then the blade will open.

**Blades closure:** Keep the trigger pressed for approximately 5 seconds, and after the acoustic signals (2 beeps) stop pressing the trigger. The blade will remain closed. Then press the trigger 2 times to activate the electric shear again.

**Change opening of the blade:** Keep the trigger pressed for approximately 3 seconds, after the acoustic signal (1 beep) stop pressing the trigger. The blade will change opening.

**Activate/Deactivate progressive cutting:** With the shear OFF, press the button ON/OFF and then hold down the trigger for approximately 15 seconds until you hear the acoustic signals (3 beeps).

6. Before starting to cut, check that the shear works well, please check that when the trigger is pressed the blades close and when the trigger is released the blades open. Repeat this a few times.
7. Start working after checking that the shear works well.

➤ **Turn OFF**

1. Press the trigger and holding it down for a few seconds and then releasing it, the blade will close and not open.
2. Turn OFF the battery, remove the battery from its location in the shear.
3. Organize, clean and store the shear in the suitcase.

### ➤ Failure tips

If there is a fault, perform related processing according to the display indicator code.

Display screen failure warning:

When using the shear, if any of these codes appear on the display screen, it can be repaired or processed according to the corresponding fault advice.

Alarm content	Number of flashes LED	Number of beeps	Display screen fault advice
No fault	0	0	E00
Anti-hand cutting protection	1	1	E01
Current sensor error	2	6	E02
MOS tube damage	3	6	E03
Hall fault / Blade breaking	4	3	E04
Peak overcurrent / Average current protection	5	5	E05
Blocked opening / Blocked rotor	6	3	E06
Default phase	7	4	E07
Undervoltage / Overvoltage	8	1	E08
MOS / chip overtemperature	9	6	E09
PWM communication failure / Shears bit voltage error	10	2	E10
Shears bit type error	10	7	E10
EPROM error	11	6	E11
Phase detection failure	12	4	E12
Programming error	13	6	E13
Historical cutting times	14	8	E14
Maintenance cutting times	15	8	E15
The number of batteries in the shears bit and battery pack is different	16	9	E16
The mainboard fails to communicate with the battery pack	17	10	E17

E14: Defined, unexecuted protection.

E15: Defined, only unexecuted protection is reminded and the display screen beeps five times per minute.

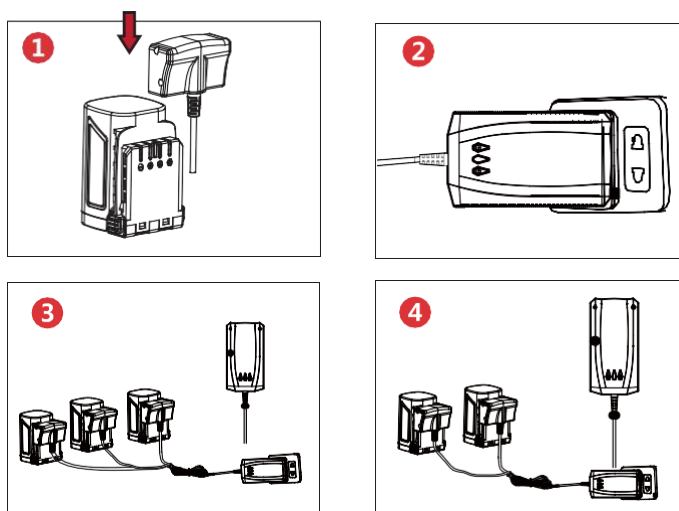


## Use, maintenance and precautions of the battery

### ➤ Battery charge

The battery of the new shear is not fully charged. Place the battery on the desk, insert the charger output connector into the battery socket as illustrated in Fig. 1, then plug the charger into the power socket. When the indicator light comes on, charging begins. When the charger indicator light is red, it indicates that the charger is charging; when it is green, charging has already been carried out and the battery can be used.

Charging steps:



1. Take the battery and insert the charger plug into the battery, as shown in Fig.1;
2. Plug the charger into an electrical outlet.
3. When the charger indicator light is red, it indicates that the charger is charging; when it is green, it indicates that the battery is charged.



**Note:** Each indicator light represents the charging status of different charging plugs. This charger has two or three plugs, as shown in Figure 3-4. It is equipped with a two-charge or three-plug charger depending on the model of the product you purchased.



Use the charger included in the package to charge the battery, there is an indicator light corresponding to each charging plug (either for individual charging or multiple charging, check the indicator light on the charger to determine if charging is complete. The charger adopts sequential charging method instead of simultaneous charging).

Note: If the battery is connected or the power supply is not connected, the indicator light will be green.

**IMPORTANT:** Batteries connected to a charger that is unplugged from the electrical outlet will cause a deep discharge of the batteries and they will be unrecoverable.

To charge two batteries with one charger:

As shown in the figure

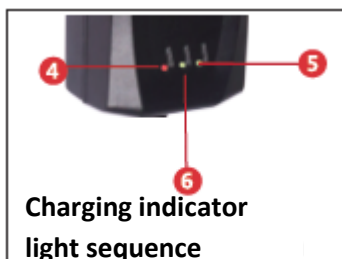
1. Not charged
2. Charging
3. Fully charged



To charge three batteries with one charger:

As shown in the figure

1. Not charged
2. Charging
3. Fully charged



Note: In case that two or three batteries are connected, charging will start by the order of 1 to 2 and then to 3, during which the indicator light is red and will turn green when the battery is fully charged. If the current battery is fully charged, the charger will jump to the next battery to be charged in the order mentioned above.



➤ **Precautions**

1. It is normal for the charger and battery to become slightly warm during charging.
2. A new battery or a battery without long-term use will take approximately 5 charge and discharge cycles to reach maximum capacity.
3. Do not recharge the battery after a short period of operation, as it can reduce battery life and performance.
4. Do not use a damaged battery or disassemble the charger and/or battery.
5. The battery will explode when it catches fire. Do not heat the battery.
6. Do not charge the battery outdoors and/or in humid environments.
7. As the battery power decreases, the cutting diameter capacity will decrease.
8. During the charging process, the electric shear must be unplugged, it is strictly forbidden to use electric shear when they are charging.
9. Do not store the battery in a humid environment.
10. **VERY IMPORTANT:** If the battery is not used for a long time, it should be recharged at least once every 3 months to maintain the battery life.

➤ **Battery maintenance**

1. Do not charge in an environment with the temperature below 0°C and above 45°C, can damage the battery and charger.
2. Turn OFF the power button before connecting the battery. If the power button is ON, accidental connection of the battery with the shear is likely.
3. Only use the charger specified by the manufacturer to charge the battery, if the charger is not compatible with the battery, it may cause fire and other hazards when charging the battery.
4. When the battery is not in use, keep it away from small metal objects such as paper clips, coins, keys, nails, screws that will lead to shortcircuit the battery, short-circuit of the battery can cause burns or fire.
5. Do neither disassemble nor reassemble the battery.
6. Using a battery that has been short-circuited is prohibited.
7. Do not use the battery near any heat source.
8. Do not throw the battery into fire or water.
9. Do not charge near fire or sunlight.
10. Do not insert any object into the battery and/or hit or throw the battery with a hammer or foot.
11. Do not use batteries that are severely damaged or deformed.
12. You cannot solder directly on the battery.
13. Reversing the charge, reversing the polarity and over-discharging the battery is prohibited.
14. Do not connect the battery directly to the power outlet and/or the car cigarette lighter.
15. Do not use the battery in non-designated devices.
16. Direct contact with the lithium battery is prohibited.



17. Do not place the battery in containers with high temperature and high pressure, such as an oven or microwave.
18. Do not use any leaking battery.
19. Keep the battery away from children.
20. Do not use or place the battery under the sun (or direct sunlight), otherwise the battery may overheat and catch fire, resulting in a malfunction and a shorter service life.
21. Do not use the battery in places with static electricity (> 64V).
22. When the battery is used for the first time, in case of corrosion, bad smell or any abnormality, it is prohibited to use the battery and must be returned to the point of sale.
23. If the skin or clothing is stained with battery electrolytes, rinse with clean water.
24. If the electric shear is not used for a long time, the battery should be charged for storage.

➤ **Maintenance before use**

Instructions before start-up:

1. Check the battery power before use.
2. When the shear is not in use, make sure it is unplugged. In particular, note that the shear must be disconnected during the addition of lubricant, sharpening and/or replacement of the cutting blade.
3. Check cutting blade and counter blade adjustment before using electric shear.

## Cutting blade lubrication



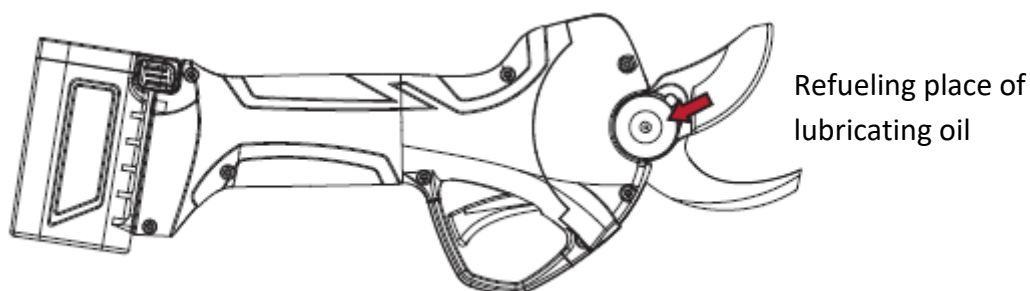
Please, disconnect the power supply of the shear before operation.

Lubricate the cutting blade before using the shear or after using it for more than 4 hours.

To properly lubricate the shear cutting blade, it is necessary that the cutting blade and the counter blade are open, as seen in the following image.

### ➤ Steps for cutting blade lubrication

1. Lubricate in the blade pin hole in the back of the shear. Squeeze the lubricating oil from the bottle into the hole in the cutting blade and cut through the air several times so that the lubricating oil is distributed evenly.



## Adjusting the cutting blade



Make sure that the power supply of the shear is disconnected before the operation.

Check cutting blade tension/tightness before using shear. A cutting blade with the proper tension will not rotate left and/or right. Proper blade tightening will save labour when cutting with the electric shear.

**Precaution:** when the cutting blade is closed it should not have a lateral oscillation. Lateral rotation is an abnormal state, as it will create a gap between the two blades and cause the gear teeth to not mesh properly, thus damaging the mechanical structure.



## Cutting blade replacement

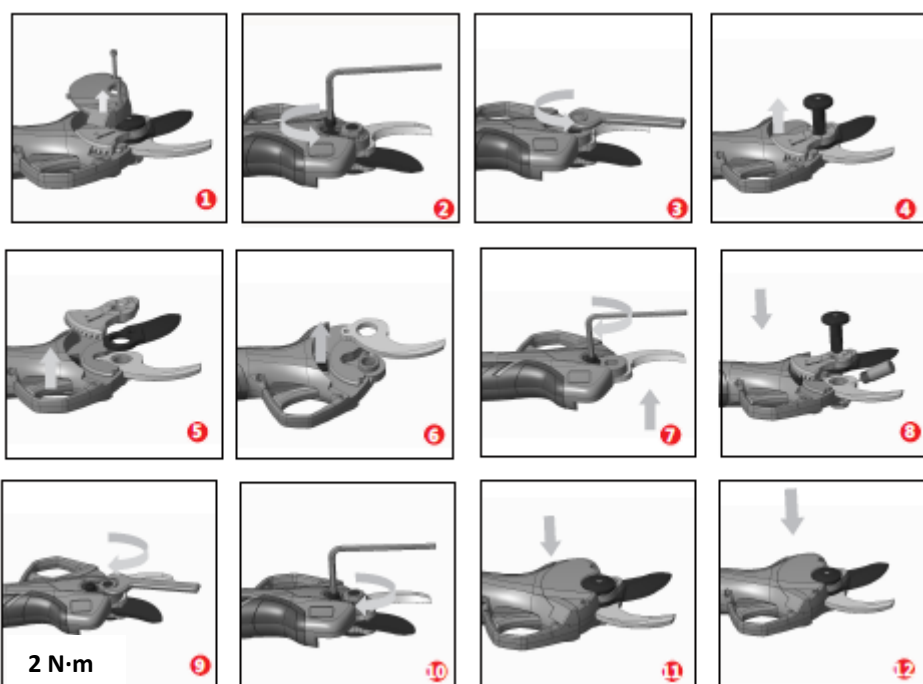


**Make sure that the power supply of the shear is disconnected before the operation.**

When the cutting blade no longer crosses the counter blade or shows signs of severe wear while cutting, it is recommended to replace the cutting blade.

The steps for blade replacement are as follows:

1. For safety, turn the shear OFF and remove the battery before replacing the cutting blade.
2. Follow the steps in the image below to replace the cutting blade.
3. After replacement, clean, connect the battery, check the power and close the blades.



## Use, maintenance and precautions of the shear

1. Do not cut beyond the specified cutting diameter of the shear; do not cut branches; do not cut hard objects such as metal and stone or any other material. Do not hold any tool with a vise. If the cutting blade is worn or damaged, please replace it in time.
2. Keep the shear and its components clean. Use a clean cloth to clean the electric cutting shear, batteries and charger (do not use corrosive cleaners or solvents). Use a soft brush or dry cloth to clean the dust from the shear head.
3. Do not immerse the electric cutting shear, batteries and/or charger in any liquid, including water.
4. Use the electric cutting shear in accordance with the instructions for use. Do not use the electric shear, battery and charger if they are damaged.
5. If pressing the power button does not turn the shear ON or OFF correctly, do not use it, since it is dangerous to use it when the power button does not work. It will need to be repaired.
6. Make sure the power button is OFF when making adjustments, replacing accessories, or storing the electric shear. This preventive measure will reduce the risk of accidental starting of the electric shear.
7. Keep unused shear out of the reach of children. Do not allow the use of the shear to those who are not familiar with electric shears or who do not understand the instructions. It is dangerous for untrained users to use it.
8. When using the shear and its accessories, follow the instructions for use and methods of use, as well as take into account the work environment and the tasks to be performed. Using them in any operation that does not meet the requirements can be dangerous.
9. After using the shear, remove dirt from the cutting blade and counter blade, then lubricate the cutting blade and check the blades fit.



## Safety precautions

Keep the blades closed when the shear stops working.



**Warning!** Reading all instructions carefully, failure to follow all instructions can cause electric shock, fire or other serious injuries!

### ➤ Workplace safety instructions

1. Keep the workplace clean, dark and chaotic workplaces can cause accidents.
2. Do not operate the electric shear in explosive, flammable and/or humid environments.
3. Operate the electric shear only after children and bystanders leave the job site to avoid accidental injuries during operation.

### ➤ Electrical safety instructions

1. The plug on the battery must match the connector on the battery. Do not modify the plug and/or connector.
2. Do not expose the shear to rain or moisture. Water or other liquids can increase the risk of electric shock and damage to the device.
3. Do not mistreat the cables. Do not use the power cord to lift, pull the shear, or unplug. Keep the shear away from heat, oil, sharp edges or moving parts. Do not use the charger when the power cord or plug is damaged. Damaged and tangled cords can increase the risk of electric shock.

### ➤ Personal safety instructions

1. Be alert, pay attention to the operation and stay awake when working with the electric shear. Do not use the electric shear under fatigue, medication and/or if alcohol has been consumed. Distraction during operation can cause serious personal injuries.
2. Wear safety protections and always wear protective glasses. In appropriate conditions, non-slip safety shoes, helmet, hearing protection, etc. can reduce personal injuries.
3. Remove all adjusting keys before turning ON the shear. Any adjustment wrench left in the rotating parts of the shear can cause personal injuries.
4. When operating, do not overstretch your hands, keep them away from the work area, ensure that no material or surface under the operating area is not damaged, always pay attention to the balance between the feet and the body to better control the electric shear in case of any accident.
5. Dress appropriately, do not wear loose clothing, and keep your hair, clothing, and sleeves away from moving parts, as loose clothing, ornaments, or long hair can get caught in moving parts.

## Precautions

1. When the hoof to be cut is too hard, the trigger should be released in time, and then the cutting blade will automatically return to the open state.
2. If the battery cannot be charged properly, first check if the battery charger is properly connected. Then make sure the charging voltage is the same as indicated in the nameplate.
3. If any electrical or mechanical failure occurs, turn OFF the power button immediately.
4. If it does not work according to the instructions, it may cause the battery liquid to erupt. Please do not touch the liquid. In case of accidental contact, rinse immediately with water. If the liquid splashes into the eye, after rinsing with water, go to hospital, as the liquid expelled from the battery may cause irritation or burns.

## After sales service

In case of any technical problem during use, contact the nearest authorized technical service or point of sale.

Official after sales service:

**ARVIPO**

C/ Dels Esqueis, 27

08415 Bigues i Riells

Barcelona – Spain

Tel. +34 93 628 98 85

Web: [www.arvipo.net](http://www.arvipo.net)

E-mail: [info@arvipo.net](mailto:info@arvipo.net)

*Arvipo reserves the right to make technical improvements to the product described in this document. Please understand if there is any change. If there are discrepancies between graphic images, texts and actual objects in this document, the latter will apply.*

## CPS Safety system



### CPS (Cut Prevent System) running

The **CPS (Cut prevent system)** is a risk prevention system to suffer any injury by cutting the user himself. It is a system totally integrated in the equipment.

### How does it works:

The trigger emits a small signal of high frequency totally harmless to the human body. The user and the equipment become a set where the electronics are controlling the changes of the signal of the same. When any part of the user's body contacts a metal part of the shear, the value of the signal changes. If it reaches the stipulated limit, the electronics will issue the shear stop order and emit an acoustic signal.

### Usage tips:

The finger used to press the trigger must always be uncovered and must have direct contact with the metal part of the trigger. In this way we ensure symbiosis between the shear and the user by activating the **CPS** system automatically.

### Cutting blade lock:

If in any case the **CPS** has been activated and the blade has been locked, then press the trigger 2 times to activate the electric shear again..

### Activate/Deactivate CPS:

With the shear OFF, hold down the ON/OFF button until 3 beeps are heard (approximately 10 seconds). After this, the shear opens normally and the **CPS** will be disabled. When you stop the shear and open again, normally, the shear will remember that you have the **CPS** system deactivated. If we want to reactivate the system, we must perform the same operation again.

**WARNINGS:** This system is a preventive element of additional protection against eventual unwanted cuts. In no case should the cutting blades be touched as a test. As any electronic element can give unforeseen faults.

Here we must explain, that the skin of the human body, in a way, is insulating of electricity. On the contrary, blood has a very powerful conductivity. When testing the system by touching with our fingers, it may seem that the system does not work, in case of very dry skin, calluses, etc., depending on how and where we make contact. On the contrary, in case the cutting blade touched the skin of the user and came into contact with the blood, the system would receive a strong signal change (by conductivity of the blood) and stop automatically.

The CPS system also works as a preventative for unwanted cuts of wires or other metallic elements (touching the metallic part with the hand). It will not work in contact with aluminium or with oxidized wires or other cases of advanced oxidation.

It is advised that during the working day, the user checks that the system works correctly.

## WARRANTY CONDITIONS

**ARVIPO** gives a **TWO YEAR** warranty on the **PS32 HOOF** for **PARTICULAR USE** from the date of the sales invoice to the final buyer.

For **PROFESSIONAL USE**, in which the final buyer is not a private user, **ARVIPO** gives a **ONE YEAR** warranty on the **PS32 HOOF** unit from the date of the sales invoice to the end purchaser.

The warranty applies to any manufacturing defect or duly contrasted material, covering the replacement of the parts. The eventual expenses of immobilization, labor, displacement, approach or transport, will be, in any case, borne by the buyer. As regards parts that are not manufactured by **ARVIPO**, the warranty will be limited to that of the **ARVIPO** supplier and the parts will never be warranted for wear resulting from its use such as cutting blade, counter blade, pinions...

The warranty will in no case oblige **ARVIPO** to pay any compensation whatsoever.

### **This warranty is null and void when:**

- The equipment has more than **500,000 cuts**.
- The instructions for use, safety, maintenance and service given by **ARVIPO** are not observed.
- The application of the shear does not correspond to the one intended by **ARVIPO**.
- The faults that occur due to misuse or inappropriate use.
- The repair or maintenance is carried out in workshops not authorized or licensed by **ARVIPO**.
- There is the assembly of parts or accessories that are not original.
- Exterior agents (fire, flood, lightning, rust, etc.).
- The defect that arose was due to improper or defective maintenance by the user or third parties.
- Any modification to batteries, motor, cutting blade or any of its technical characteristics.
- The DISTRIBUTOR has not properly registered the equipment on the website [www.arvipo.net](http://www.arvipo.net) within one month from the purchase of the equipment. The next page explains how to register the warranty for the equipment.

*This warranty will be voided for all purposes, the owner of the machine being responsible for any breakdowns, faults, damages, losses or claims that may occur.*

In order to process any type of warranty, it is essential to properly fill in the "Technical service and/or warranty request" form. The document can be downloaded at [www.arvipo.net](http://www.arvipo.net).

All warranty requests must be accompanied by the defective part and its reading with the Arvipo software.

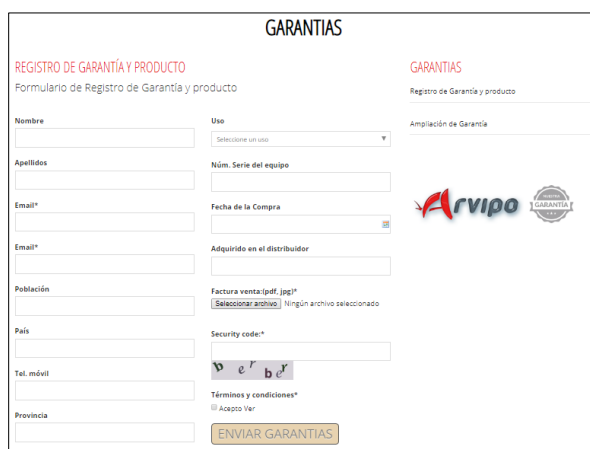
**ARVIPO** reserves the right to make any modification to the technical and operating characteristics, materials, data or photos, without prior notice. In accordance with organic law 15/1999 on the Protection of personal data, we inform you that the data contained in the warranty are incorporated into an automated **ARVIPO** file protected with restricted access and are exclusively used for the after-sales service of warranties. If you wish to make use of the right of access, rectification or cancellation of your data, you can send a letter with acknowledgment of receipt to **ARVIPO**.

## WARRANTY REGISTRATION

**1st:** Go to the website: [www.arvipo.net](http://www.arvipo.net)

**2nd:** Select “WARRANTY” → “WARRANTY AND PRODUCT REGISTRATION” (<https://www.arvipo.net/es/registro-producto-garantia.cfm>)

**3rd:** Fill in all the boxes and attach the bill in .pdf or .jpg format.



The screenshot shows the 'GARANTIAS' (Warranties) registration form on the Arvipo website. The form is titled 'REGISTRO DE GARANTÍA Y PRODUCTO' and 'Formulario de Registro de Garantía y producto'. It contains several input fields for personal and product information, including Name, Surname, Email, Address, Phone, and Province. There are also fields for product details like 'Uso' (Use), 'Núm. Serie del equipo' (Equipment Serial Number), 'Fecha de la Compra' (Purchase Date), and 'Adquirido en el distribuidor' (Acquired from the distributor). A section for 'Factura venta (pdf .jpg)' (Sales Invoice) allows users to upload a file. A 'Security code' field with a CAPTCHA is also present. At the bottom, there is a checkbox for 'Términos y condiciones' (Terms and conditions) and a button labeled 'ENVIAR GARANTIAS' (Send Warranties).

**4th:** Once all the boxes are filled in with the correct information, click on “SEND WARRANTY”, the equipment warranty will be entered.



# PS32 HOOFF

**More information:**

Customer service telephone: +34 93 628 98 87

Send us an email at: [info@arvipo.net](mailto:info@arvipo.net)

Web: [www.arvipo.net](http://www.arvipo.net)